

Hardwoods

Hardwoods are available cut-to-order from our sawmill, or boards can be self-selected from our stores and timber shop. It can be **fresh sawn** or **kiln dried**.



SCOTTISH OAK

| | |
|-----------|----------------------------|
| 1" | £80/ft ³ + VAT |
| 1.5" & 2" | £90/ft ³ + VAT |
| 2.5"-4" | £100/ft ³ + VAT |



ASH, SYCAMORE, BEECH, LIME

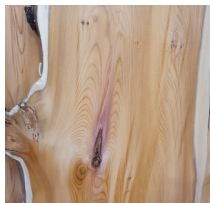
| | |
|-----------|---------------------------|
| 1" | £55/ft ³ + VAT |
| 1.5" & 2" | £65/ft ³ + VAT |
| 2.5"-4" | £75/ft ³ + VAT |



ELM & YEW*

| | |
|-----------|------------------|
| 1" | Price on request |
| 1.5" & 2" | |
| 2.5"-4" | |

*Yew is a high density softwood.



Premium grains and figures will incur premium prices. These include, but are not limited to: Spalting, Pipping and Burrs, Olive Ash, Rippled Sycamore, etc.



Flooring and Mouldings

Tongue & Groove Flooring



HARDWOOD

Ash, Beech or Sycamore:
£75.80/m² + VAT
Oak:
£95.80/m² + VAT



Standard sizes:
20mm thick x 85 or 135 mm wide
Wider boards available on request.



Our flooring boards are supplied in **random lengths**, with the ends left untrimmed for specification on site.
Once laid, we recommend a light sanding followed by an oiled finish.



LARCH FLOORING

£38.90/m² + VAT
Standard sizes:
17mm thick x 85 or 135 mm wide

Premium woods, such as Spalted Beech, will incur additional charges.

Skirting and Architrave



Standard sizes (bespoke available):
20 x 95 mm from £6.90/m + VAT
20 x 145 mm from £9.90/m + VAT
Available in a variety of timber species.



Price list 2025



Largest timber selection in Scotland

We are a social enterprise hardwood sawmill, owned by a Scottish charity and based close to Dunfermline. We specialise in the supply of homegrown, sustainably sourced quality Scottish hardwoods and premium softwoods (such as Larch and Douglas Fir).

We are a sawmill with 26 years experience of cutting, seasoning and supplying a wide range of hardwoods for a wide range of uses. Please come and visit our onsite shop and sawmill, or visit our online shop at www.scottishwood.co.uk.

Contact us

enquiries@scottishwood.co.uk

www.scottishwood.co.uk

Larch Cladding

Profiled Cladding



SHIPLAP

£36.60/m² + VAT

Positioned horizontally on the wall.
Overlapping boards.



V-GROOVE

£36.60/m² + VAT

Positioned horizontally on the wall.
Tongue and groove.



SHADOW GAP

£36.60/m² + VAT

Positioned vertically on the wall.
Overlapping boards.



ROUNDED PANEL

£36.60/m² + VAT

Positioned vertically or horizontally.
Tongue and groove.

Our profiled cladding is supplied in the following standard board sizes (thickness x width):

- 18 x 95 mm
- 18 x 120 mm

The standard lengths are 2.4 or 3.6 m. Alternative sizes can be supplied to order.



Scan this QR code to see our **Larch Cladding Guide video**, which includes information about the most popular types of cladding and how to install them.

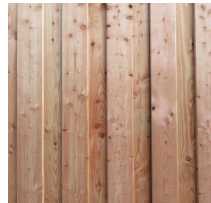
Standard Cladding



BATTEN ON BOARD

£31.90/m² + VAT

Boards: 22 x 150mm
Battens: 22 x 45mm



BOARD ON BOARD

£27.80/m² + VAT

Boards: 22 x 150mm
Price based on a 25mm overlap.



NATURAL, WANNEY EDGE

£25.90/m² + VAT

Standard boards: 22 x 175–275mm
Thin boards: 18 x 175–225mm
(one face dressed)
Price based on a 38mm overlap.

About Larch

All our cladding and decking is supplied in Scottish grown **Heartwood Larch**. Larch is a naturally durable timber which means the timber will require no additional treatment or weatherproofing.

Larch boasts a **warm reddish brown** hue that weathers gracefully over time, turning an aesthetically pleasing **silver grey**.

Larch can be cut to order or self selected from our pre-cut stock onsite, including **dressed boards, cladding, decking** and **posts**. Our Larch is available **fresh sawn, seasoned**, and **kiln dried**.

Larch Decking



STANDARD DECKING

33 x 145 mm £39.90/m² + VAT
25 x 145mm £35.50/m² + VAT



NARROW DECKING

33 x 95 mm £39.90/m² + VAT
25 x 95mm £35.50/m² + VAT

Decking boards come planed all round and chamfered on the top corners.

The standard length is 3.6 m. Other lengths are available on request. Grooved decking is also available — please enquire for details.

Posts, Beams and Frames

Scottish Oak, Douglas Fir and Heartwood Larch can also be supplied as posts, beams and framing.

We regularly supply timber for the green oak framing industry along with smaller projects such as bridge building, garden pergolas, gate posts, fencing, etc.

